



PAVAN
MITRA

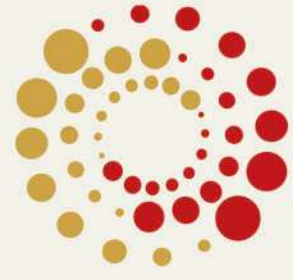
A P A R T M E N T S

@ MADHURAWADA, VISAKHAPATNAM



Flat No.102, Surya Towers, Sandeepani Nagar, Gitam College Road,
Yendada, Visakhapatnam-530 045.

FOR ENQUIRES CALL
98481 25925
7036 757575



PAVAN MITRA

APARTMENTS
@ MADHURAWADA, VISAKHAPATNAM

COMFORT &
AFFORDABLE
LIVING



ALL 2BHK APARTMENTS

Building your
dreams
into reality...



The Promoters - **Sri Pavan Properties** have steadily made phenomenal growth with vast expanse of development activity in and around the state. They have over a decade of experience goes a long way in flawless, perfect and punctual execution.



RESPONSIBLE **BUILDING** FOR
SUSTAINABLE
LIVING




**PAVAN
MITRA**
APARTMENTS
@ MADHURAWADA, VISAKHAPATNAM



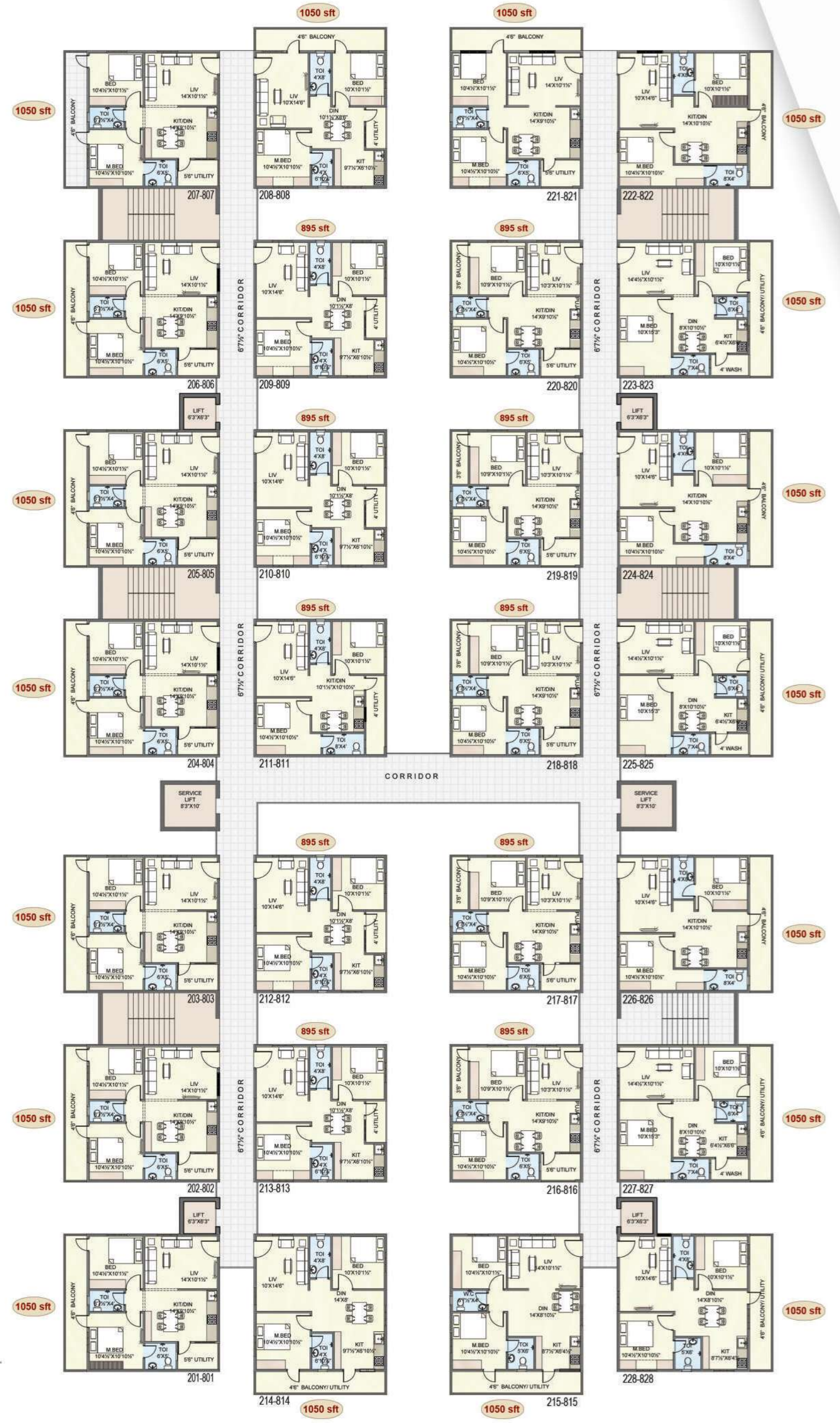
Excellent infrastructure to execute projects of any magnitude, modern machineries to handle hi-tech projects, introduction and application of innovative technologies from time to time, a team of well qualified engineers and technical personnel managerial staff who put their heart and soul in to the projects.

895 SFT
1050 SFT
218 FLATS

GROUND FLOOR PLAN



TYPICAL FLOOR PLAN



Note : For detailed area calculations please refer to sales office.

PEACEFUL **LIVING** FOR
HAPPY FAMILIES




**PAVAN
MITRA**
APARTMENTS
© MADHURAWADA, VISAKHAPATNAM



SRI PAVAN PROPERTIES

Backed with rich experience in the field of construction ably understands the importance of safety and style within easy reach of urban comforts. Come, Be a part of the world that has everything ...



A NEW LANDMARK

Sri Pavan Properties presents spacious 2 BHK homes that offer the best of living standards for the new-age Indian family. Nestled in a safe and nurturing neighbour hood, Pavan Mitra is the perfect place for families with children and senior members. The serene and lively neighbourhood offers just scope to a peaceful living. Pavan Mitra is the perfect place to make your cozy nest.




**PAVAN
MITRA**
APARTMENTS
@ MADHURAWADA, VISAKHAPATNAM



PROJECT HIGHLIGHTS

- * GVMC Approved residential project
- * 8 floors highrise building
- * 895sft & 1050sft, East facing & West Facing flats
- * No common walls
- * 100% vastu
- * Grand designer entrance gate
- * 7000 sft amenities
- * sewage treatment plant
- * 2-level parking
- * Generator back-up for common areas, Lift & Borewell
- * Departmental store
- * Yoga hall
- * Gym

ISOMETRIC VIEWS



EAST FACING
1050 sft.



WEST FACING
1050 sft.



EAST FACING
895 sft.



WEST FACING
895 sft.



SPECIFICATIONS

STRUCTURES

Wind and Earthquake resistant R.C.C framed structure in accordance with IS code

SUPER STRUCTURE

In Table molded fly ash bricks with cement mortar 6" thick for exterior walls and 4" inch thick for internal walls.

DOORS

Main Door : Quality teak wood door and frame with finest Polish.

Internal Doors : Well Seasoned country wood frames and water proof flush doors, PVC doors for bathrooms.

WINDOWS

Powder coated sliding Aluminium windows or UPVC with standard Glass and safety grills.

FLOORING

2'x2' Vitrified tile flooring with 4' skirting. Staircase, Corridors and lift Lobbies are anti skid Vitrified tile or Granite flooring.

WARDROBES

Space will be provided for wardrobes.

KITCHEN

Polished Granite Platform with stainless steel sink and ceramic tiles dadoing upto 2' height above platform.

TOILETS

Western/ Indian style toilet and glazed tile dadoing up to 6' height. One washbasin will be provided with necessary fittings, Anti-skid ceramic tiles for flooring and Bathroom Fittings of ESS/Rak/Jaquar/hindware and Parryware or Equivalent make.

PLUMBING

CPVC and UPVC with Astral/Hindware/sudhakar/finolex

ELECTRICAL

Concealed Finolex/Finecap/ GM/Goldmedal/ RR /Havells or equivalent make copper wiring (ISI) with modular switches of Salzer/GM/Legrand/Vimal and Havells of Basic Model or Equivalent make for modern living.

PAINTING

Emulsion paints for interior with 2 Coat Laticecrete/ JK/ Birla or equivalent make putty, exterior emulsion paints, enamel and putty for flush doors and joinery.

LIFT

4 Nos lift facility and 2 Nos Service lift facility of Johnson/Kone or Equivalent Brand.

WATER SUPPLY

24hrs water supply from Bore well with sufficient overhead tank storage & Municipal water sump will be provided.

TELEPHONE

Facility for all Flats.

SECURITY

Security with CC Cameras where ever necessary.

STP

Sewage Treatment Plant will be provided.

GENERATOR

Power Backup for Common Lighting, Lifts and Borewell.

FIRE & SAFETY

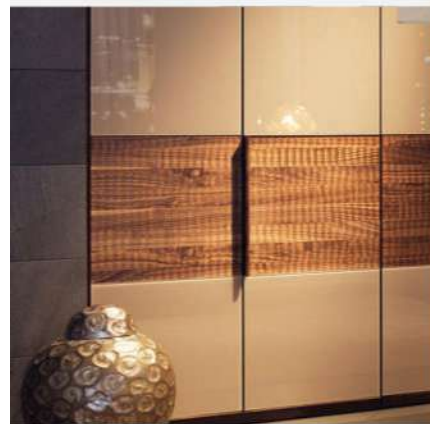
Fire sprinkler system in cellar, single headed hydrant valves in all floors, Fire alarms & public addressing system & lighting protection.

AMENITIES

Facility for GYM and Yoga/Meditation/Aerobics multipurpose Hall & supermarket space will be provided.

Note : APPEPDCL Power, GVMC Bulk Water, tax assessment, UGD Generator, Parking, Registration charges , GST any other Govt, taxes extra. Alterations other than plan is not allowed.

FRESH ROMANTIC COMFORT HOME LIFE



ihome
Kitchens & Wardrobes

Nature atmosphere into a home. Designed a source of inspiration for designers has always insisted, taken from the natural material, natural atmosphere into the home, ring you a fresh feeling.



Please visit the **ihome** Showroom at **Yendada**, Gitam College Road, Visakhapatnam.

PH: 9493934444
9492932777
7799449898

PREVIOUS PROJECTS

Our successful previous ventures in Yendada, Visakhapatnam



Surya Towers



Sri Pavan Paradise



Sri Pavan Presidency



Govinda Nilayam



Sri Pavan Arcades



Sri Kausthuba Nilayam



Pavan's Radha Residency



Pavan's Krishna Residency



Near CMR Nursery



Beside Gayathri Medical College



0.4 KM to National Highway



Near STBL Cine World

**PAVAN
MITRA**
APARTMENTS
@ MADHURAWADA, VISAKHAPATNAM



LOCATION

Pavan Mitra is in kommadi, visakhapatnam. Its quality construction 2BHK flats, Beside Gayathri Medical College, Close to National Highway, Opposite road of CMR Nursery, Opposite STBL Cine World is a marvellous residency that has a number of well designed homes. A place that is simply excellent and tranquil, An immaculate destination which is your dream home. A place is peaceful, A flawless destination that is an answer to your search for a perfect home. Its lavish exteriors seamlessly blend with its interiors for a harmonious living.



PROMOTERS



Flat No.102, Surya Towers,
Sandeepani Nagar,
Gitam College Road, Yendada,
Visakhapatnam-530 045.

FOR ENQUIRES CALL
98481 25925
7036 757575

MEMBER IN
CREDAI
Confederation of Real Estate
Developers' Associations of India

ARCHITECTS



Akshaya Infra Consultants Pvt. Ltd.
301, Waltair Heights, Balaji Nagar,
Near Siripuram Junction, Visakhapatnam, AP

STRUCTURAL ENGINEER

M.Srinivas Rao
Licensed Structural Engineer

This brochures is only conceptual presentation of the project and not legal offering.
The promoters reserve the right to alter and make changes in elevation, specification and plan as deemed fit.

Architectural Renderings & Brochure Designed by
X-LINE 3D
9700501997, 9030191068